



OAKFIELD



London Road, Uckfield
Price Guide £1,000,000



SUMMARY

Guide Price- £1,000,000 - £1,050,000

A Rare impressive Double-Fronted Victorian Gem in the Heart of Uckfield

Set on an impressive quarter-acre plot, this stunning double-fronted Victorian home perfectly marries timeless elegance with exceptional space—inside and out. Positioned in a prime central location, it offers a lifestyle of convenience, character, and luxury.

Step inside to a welcoming entrance hall that flows into two elegant reception rooms, ideal for everything from formal entertaining to relaxed family evenings. The generous lounge, framed by a striking bay window, is bathed in natural light and provides a warm, inviting hub for everyday living.

At the centre of the home sits a spacious kitchen and dining area—perfect for family life or hosting on a grand scale.

The first floor hosts multiple well-proportioned bedrooms and two bathrooms, offering flexible spaces that can adapt to your needs—be it bedrooms, home offices, or creative studios. Rising to the second floor, the impressive master suite delivers a true retreat, complete with a large bedroom, dressing room/additional bedroom, and a private bathroom.

Outside, the property truly shines. Beautifully landscaped gardens wrap around the home, featuring an inviting swimming pool for summer days and outdoor entertaining. The expansive plot provides endless potential—gardens, play areas, or even future development. A gated driveway leads to a detached garage, offering secure parking and valuable storage.

All of this sits just a short stroll from Uckfield's vibrant town centre, with shops, cafés, schools, and transport links right on your doorstep.

This exceptional home blends historic charm with generous proportions, premium leisure features, and unbeatable convenience—a rare opportunity in one of Uckfield's most sought-after locations.



Kitchen/Diner

27'2 x 22'10

Lounge

32'5 x 13'0

Reception Room 1

16'8 x 13'1

Reception 2

13'1 x 12'6

Bedroom 1

20'10 x 13'6

Bedroom 2

19'5 x 16'9

Bedroom 3

13'10 x 13'2

Bedroom 4

13'0 x 12'7

Bedroom 5

12'6 x 10'10

Bedroom 6

10'9 x 10'5

Bedroom 7

10'6 x 10'0

Bedroom 8

13'3 x 12'8

Council Tax Band - G















INFORMATION

Tenure

Freehold

Local Authority

Uckfield Town Council

Council Tax Band

G

Opening Hours

Monday to Friday	9.00am - 5.30pm
Saturday	9.00am - 4.00pm

Viewings

Please contact us on 01825 762132 if you wish to arrange a viewing appointment for this property or require further information.

Area Map



Floorplan

London Road, Uckfield, TN22 1HA

Approximate Gross Internal Area = 346.6 sq m / 3731 sq ft
 Garage = 37.2 sq m / 400 sq ft
 Total = 383.8 sq m / 4131 sq ft

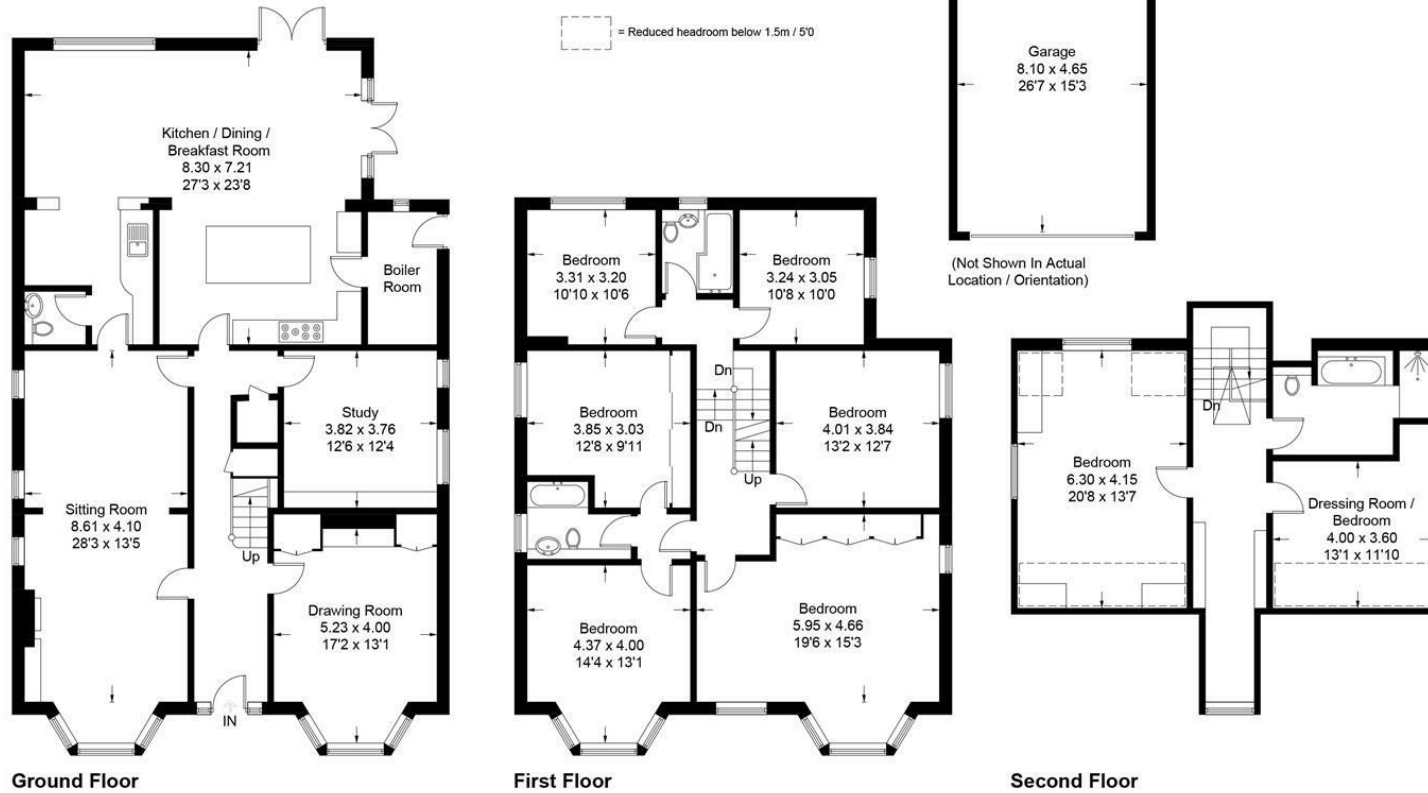
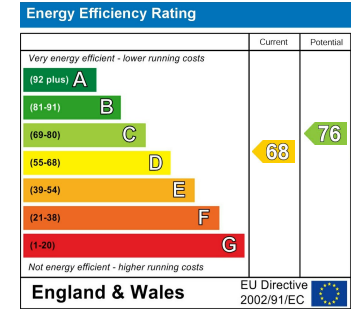


Illustration for identification purposes only, measurements are approximate, not to scale.
 Imageplansurveys @ 2026

Energy Efficiency Graph



These particulars, whilst believed to be accurate are set out as a general outline only for guidance and do not constitute any part of an offer or contract. Intending purchasers should not rely on them as statements of representation of fact, but must satisfy themselves by inspection or otherwise as to their accuracy. No person in this firm's employment has the authority to make or give any representation or warranty in respect of the property.